



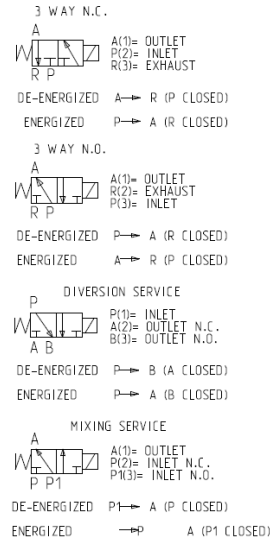
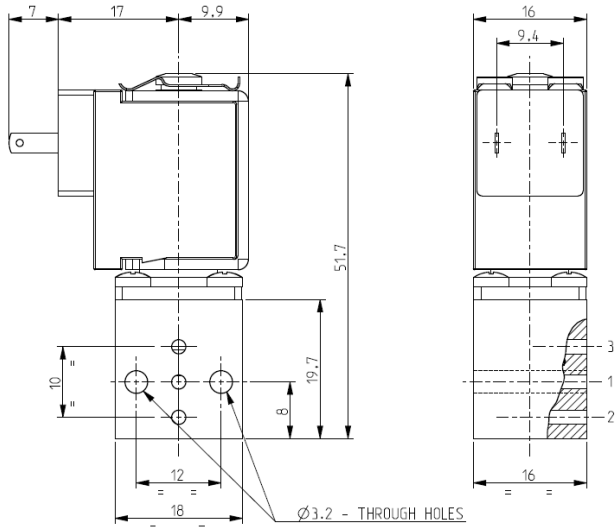
# MICRO SOLENOID VALVE

## 3/2 - NC - NO - US (Universal service)

### Direct acting

### Sub-base mounting

# V367



#### ► GENERAL FEATURES

Direct acting micro solenoid valve suitable for mounting on a sub-base or directly on the equipment.  
 Minimum overall dimensions, quick response time and high number of cycles.  
 Seal gasket for coupling supplied with the valve.  
 Suitable to shut off liquid and gaseous fluids (verify the compatibility of fluid with materials in contact).

#### ► TECHNICAL FEATURES

Maximum allowable pressure (PS) 16 bar  
 Opening time from ~ 5ms to ~ 10ms  
 Closing time from ~ 5ms to ~ 10ms  
 Fluid temperature -10°C +90°C  
 Max viscosity 3°E (22 cStokes or mm<sup>2</sup>/s)

#### ► MATERIALS IN CONTACT WITH FLUID

Body Brass  
 Sealing NBR  
 Internal components Brass, PEI (Polyetherimide) and stainless steel  
 Seat Brass  
 Core tube Brass

#### ► COIL

Continuous duty ED 100%  
 Encapsulation material PA (Polyamide) fiberglass reinforced  
 Insulation class F (155°C)  
 Ambient temperature -10°C +60°C  
 Electric connections DIN 46340  
 Protection degree IP 40 (EN 60529) with female wire terminals  
 2,8 x 0,5 totally insulated  
 Voltages DC 12-24V (+10% -5%)  
 (Other voltages on request)

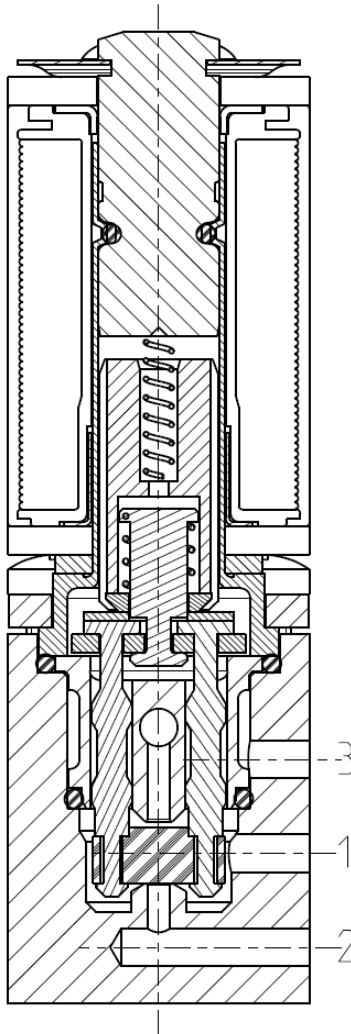
Port size	Orifice size (mm)	Differential pressure (bar)				Kv (m <sup>3</sup> /h)	Series and type		Power absorption			Sealings	Function Notes	Weight (kg)
		Δp min	Δp max		Valve		Coil	AC (VA)		DC (W)				
			Gases	Liquids				Inrush	Holding					
AC	DC	AC	DC											
-	1,2	0	-	6	6	0,04	V367B02C	ZE30C	-	-	2,5	NBR	NC	0,090
				8	8		V367B01C	ZE30A			4			
				6	6		V367B01A	ZE30C			2,5			
				8	8						4			
				6	6		V367B01G	ZE30A			4			

#### ► NOTES

- These micro-solenoid valves are not suitable for stagnating media subject to vaporization which deposit solid, calcareous, incrusting residues or similar.
- Sealings: NBR = Nitrile-butylene elastomer.
- Available with Z031 coil on request (Electric connections: DIN 46340 – micro plug connector; Protection degree: IP65)
- 1 - Model available on request only: ask for minimum quantity.

# V367

## ► SECTIONAL VIEW



## ► INSTALLATION

- Solenoid valve can be mounted in any position; vertical with coil upwards preferred.